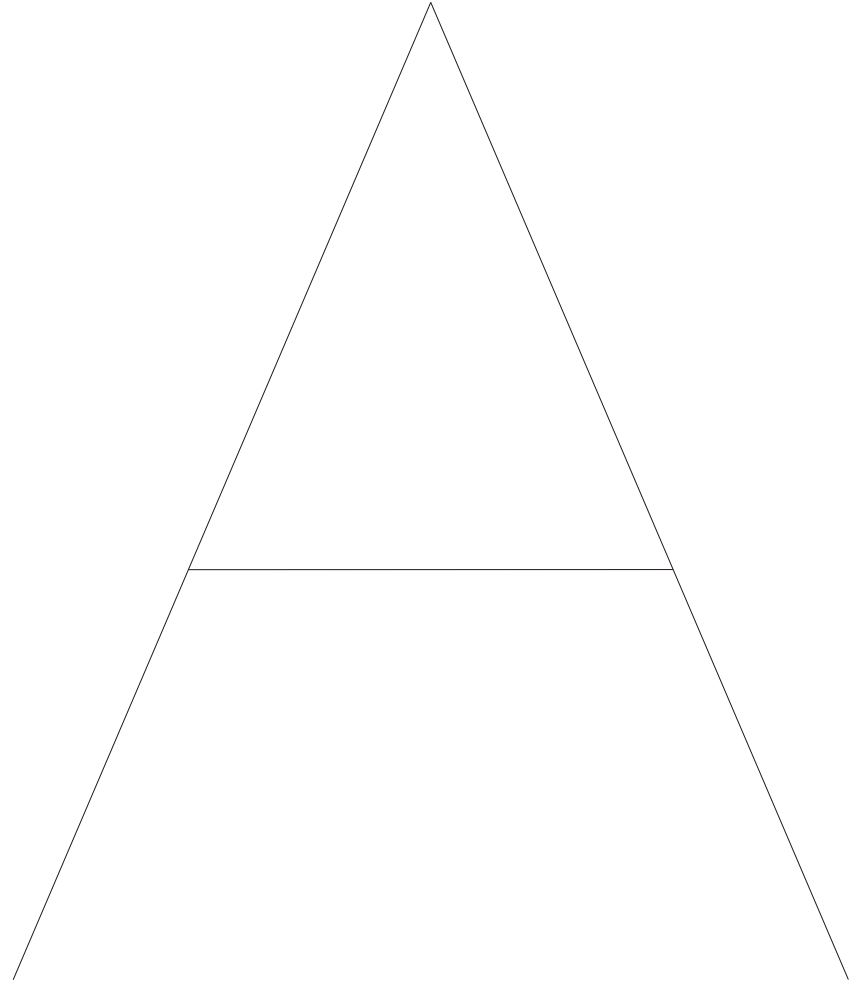


INSTRUCTION MANUAL



IMPORTANT

Thanks for choosing NAGA .
For your SAFETY, please read this manual
before using the product. Thanks.

Index

I.Wall-hung cabinets	005
II.Floor cabinets	006
III.Wall-hung mirror cabinets	007
IV.Handles	008
V.Stone top & under-mount sinks	009
VI.Warranty	010

INSTRUCTION MANUAL

Maintenance instruction:

Doors:

- 1.Clean with pure cotton cloth, use brush to clean the curve seam.Solid wood board should be cleaned with furniture wax.
- 2.Open the door and drawer of the bathroom cabinet with proper force. Do not open and close rapidly.

Main Cabinet:

- 1.Keep the cabinet door open for 15 to 20 days before use and ventilate properly to remove residual odor.
- 2.Do not use sharp objects to scrape and knock the surface of the cabinet. Avoid long-term direct sunshine to the bathroom cabinet to avoid partial color difference.
- 3.Avoid direct water sprinkling on cabinet body.Keep dry,reasonable dry and wet partition to avoid paint surface damage and cabinet body expansion.

Vanity Top:

- 1.Stonetop does not absorb water,dirt and radiate. It will be bright and clean with just a little cleaning.
- 2.Diamond is usually cleaned and maintained with neutral detergent or toothpaste. The 2000 # water sandpaper can be softened in the water and water mill partially if scratches or fouling occur. After finishing, drying the surface with dry cloth ,coating with wax, and polishing with silk fabrics,the surface will be bright as clean.
- 3.Porcelain sink can be cleaned with water and detergent, such as detergent, soap water and so on. Porcelain sink surface should always be kept clean. Dust and gravel should be removed in time to prevent abrasion. When there are slight scratches on the surface of ceramic basin, a little toothpaste can be applied on the scratches. The

Inlet & Drainage:

- 1.Keep the sewer unobstructed and prevent blockage.Call professional plumping company to clear it.
- 2.The joint-line of the basin and vanity-top should be kept dry.Wipe with cloth if there is water stain.
- 3.Pay attention to the expire date of hoses, sealing materials and other materials, and replace them in time.
- 4.Check frequently whether there is leakage in the taps and basins. When running, leaking, dripping and leaking occur, it should be repaired and handled in time.



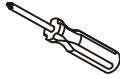

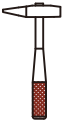

Hardware:

- 1.Avoid direct spraying of strong acid and alkaline solution on hardware.Wipe it immediately when it happens.
- 2.Keep the hinge opening and closing freely and clean. Keep the sliding rails of drawer freely and clean.

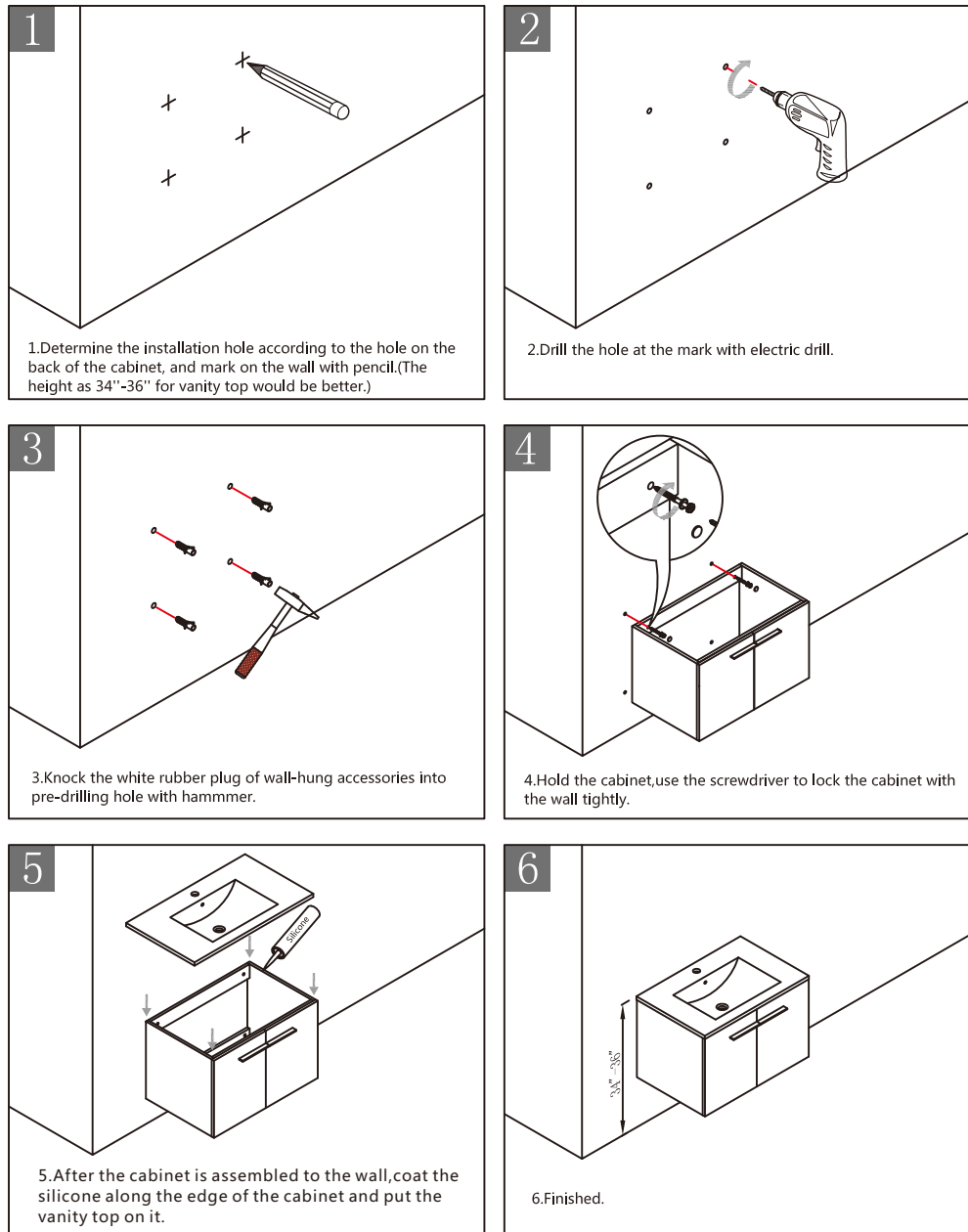
Attention:

- 1.Check the surface of the products and the accessories before installation. This product should be installed by professionals to prevent brutal construction.
- 2.Confirm whether the inlet and drainage outlet is appropriate and interference.
- 3.Keep the air circulation in bathroom, try to keep the space dry and wet separately and avoid water sprinkling. If there are water droplets, wipe them with cloth in time.
- 4.Prevent screwdrivers and other metal objects from scratching the surface of the plate when installing.
- 5.Use neutral detergent and dry them with soft cotton cloth when cleaning the cabinet.
- 6.The wall of bathroom cabinet must be load-bearing wall.

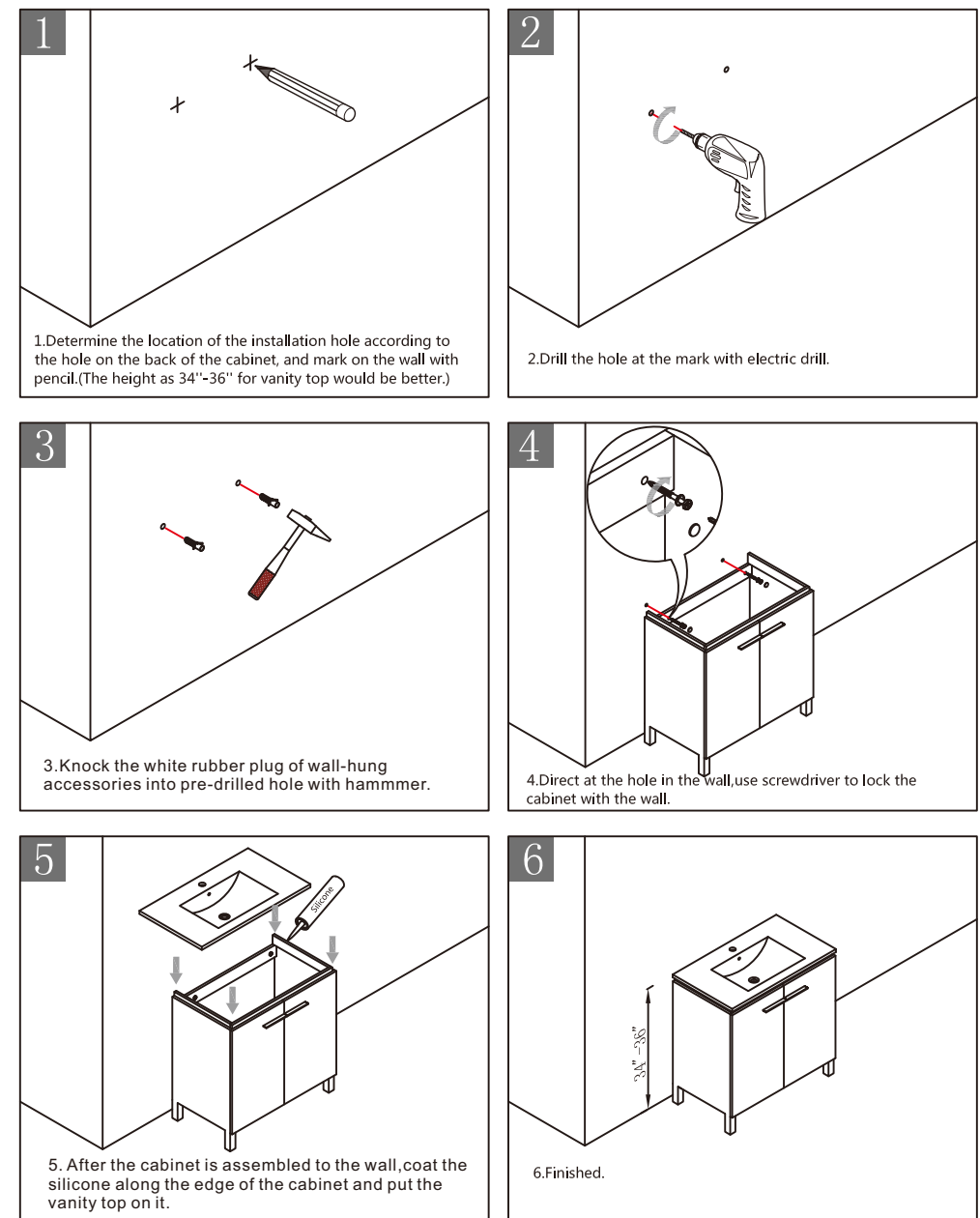
Installation tools that may need :

					
Electric Drill	Pencil	Screwdriver	Silicone	Hammer	Steel tape

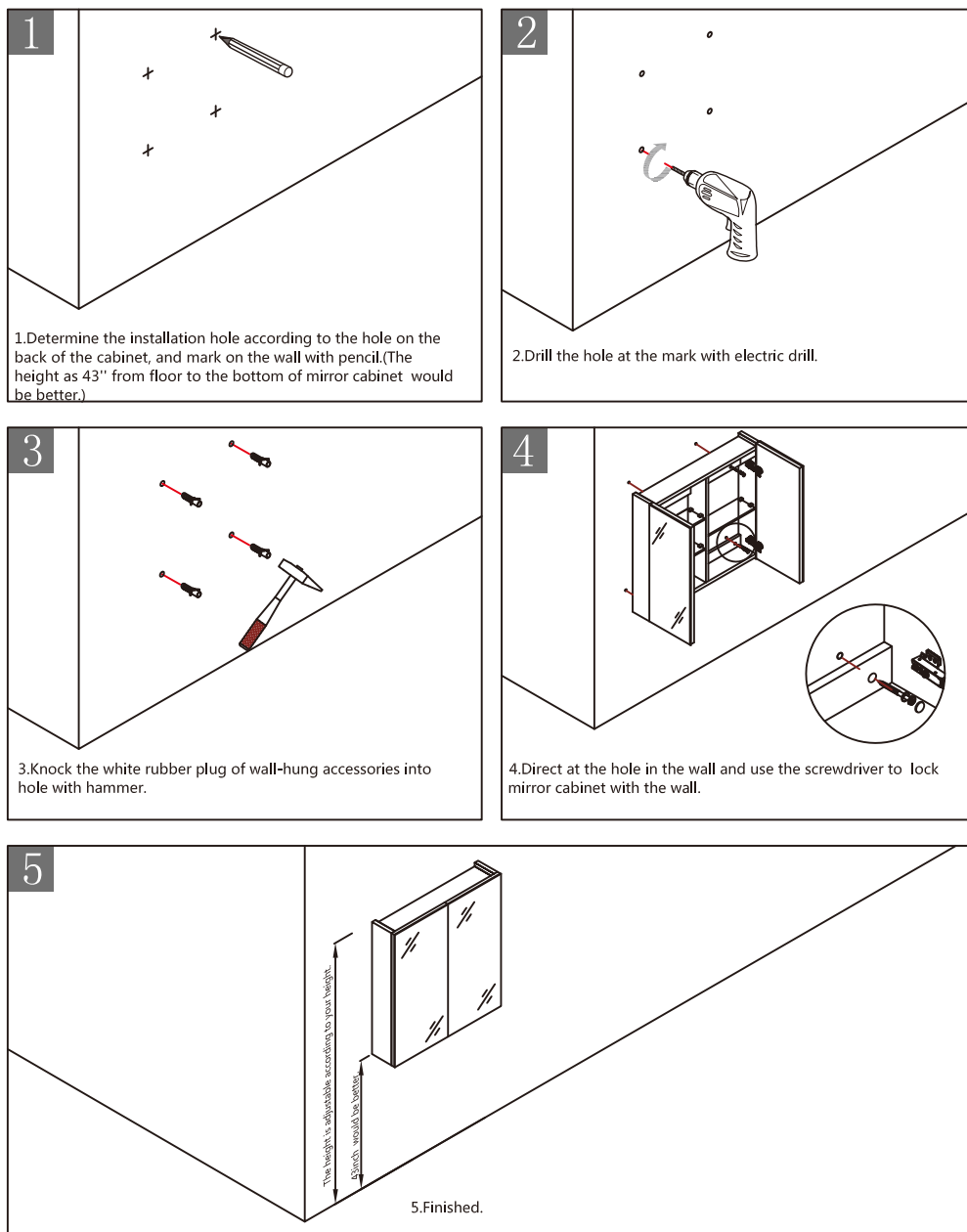
Wall-hung cabinet installation instruction



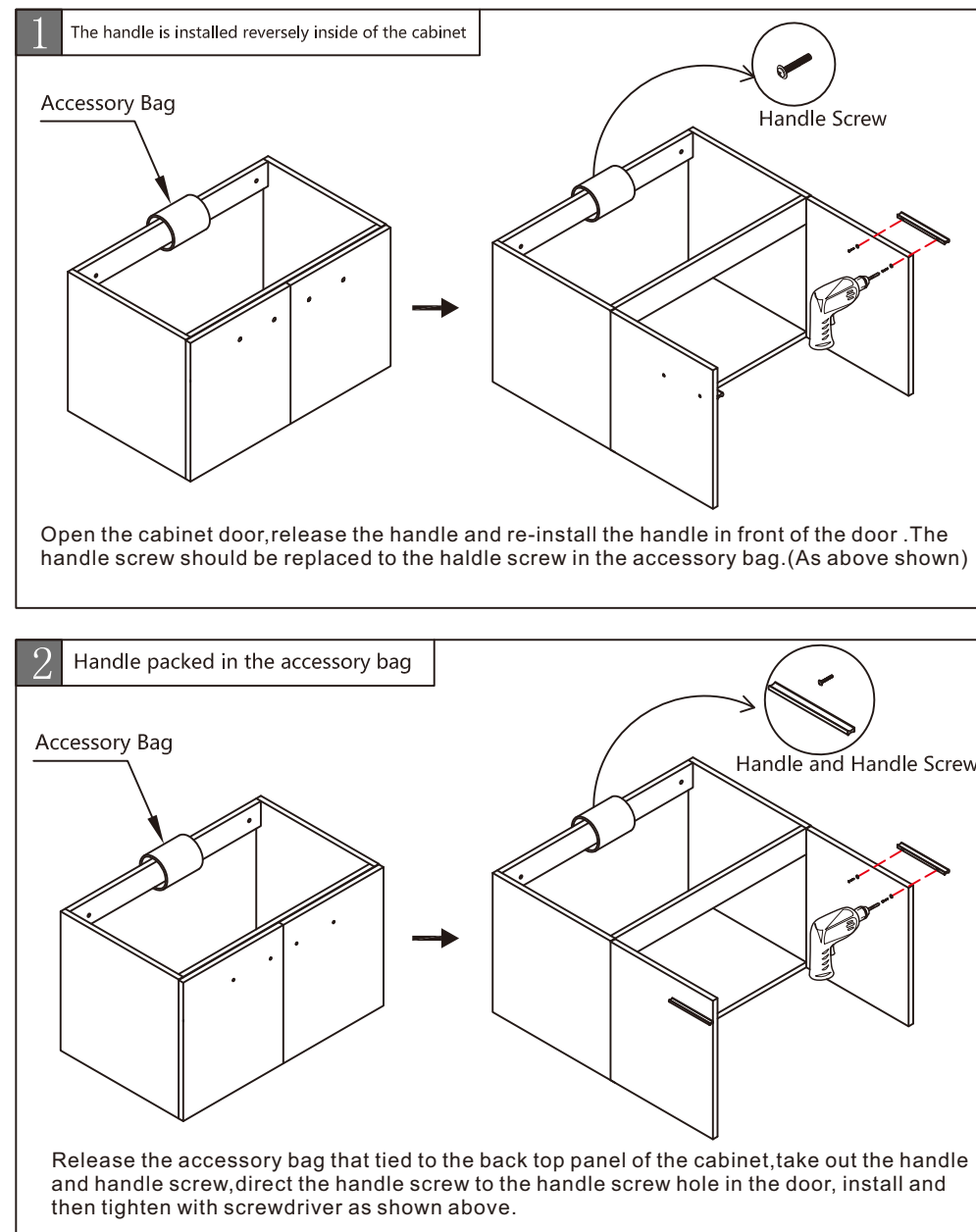
Floor cabinets installation instruction



Wall-hung mirror cabinet installation instruction

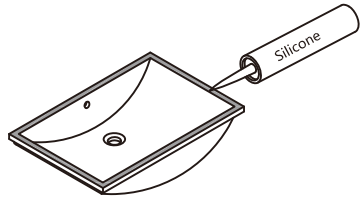


Handle Installation Instruction



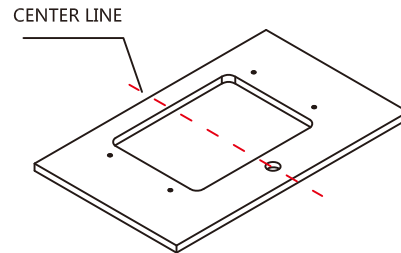
Stone top & under-mount sinks installation instruction

1



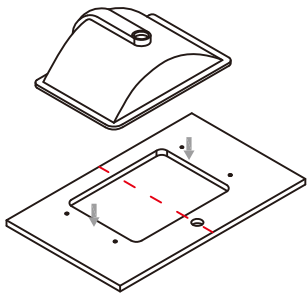
1.Coat the silicone along the edge of sink that will combine with marble top.

2



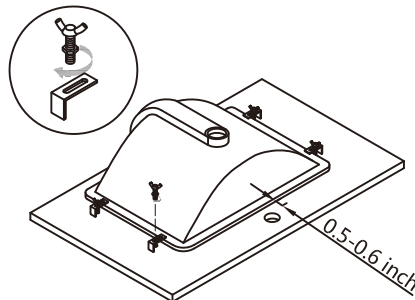
2.Put the stone top upside down and determine the middle line of the faucet hole.

3



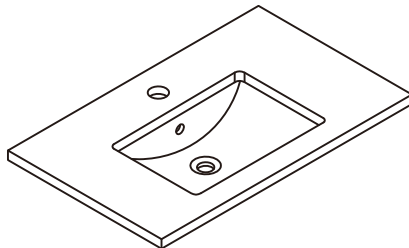
3.Direct the central point of the sink to the central point of faucet hole, and put it on.

4



4.The disance between the edge of the basin and faucet hole should be 0.5-0.6 inch ,lock the sink and stone top with sink screw as shown.

5



5.Finished.

SINK WARRANTY

BNK Lifetime Limited Warranty for Porcelain & Fire Clay

BNK warrants its Porcelain & Fire Clay Sinks to be free of defects in material and workmanship during normal residential use for as long as the original consumer purchaser owns his or her home. Gloss reduction, scratching, staining and acid or alkaline etching of the finish over time due to use, cleaning practices or water or atmospheric conditions, are not manufacturing defects but are indicative of normal wear and tear. This warranty applies only to BNK Porcelain & Fire Clay Sinks installed in the United States of America.

If a defect is found in normal residential use, BNK will, at its election, repair, replace or make appropriate adjustment. Damage caused by accident, misuse, or abuse, such as chips and scratches after installation, are not covered by this warranty. Improper care and cleaning will void the warranty. Proof of purchase (original sales receipt) must be provided to BNK with all warranty claims. BNK is not responsible for labor charges, installation, or other incidental or consequential costs. In no event shall the liability of BNK exceed the purchase price of the product.

If the Porcelain Sink is used commercially or is installed outside of the United State of America, BNK warrants the Porcelain Sink to be free from defects in material and workmanship for one (1) year from the date the product is installed, with all other terms of this warranty applying except duration. All other components other than the Porcelain component carry BNK one-year limited warranty unless otherwise specified.

STONE TOP WARRANTY

BNK carries a LIMITED LIFETIME WARRANTY on quartz composite sinks to be free of manufacturing defects under normal use.

LIMITED WARRANTY:

This limited lifetime warranty is extended to the original purchaser of this sink. BNK will repair or replace, at no charge, excluding transportation and labor, any quartz composite sink supplied by BNK that is proven to be defective within the specified period from date of purchase, to the original purchaser, provided it has been used solely in a residential application and installed correctly. An equivalent replacement will be issued to the original owner provided the defective sink was installed in accordance with the installation procedures, used and cleaned as recommended, and not damaged due to abuse, misuse, or negligence.

Chips, scratches, and stains are not deemed to be manufacturing defects. BNK will not be held liable for chips, scratches, and stains that can occur under normal use over a period of time. Please refer to the cleaning instructions to maintain your sink in its original appearance. BNK shall not be held liable under this warranty where the sink has been used in a non-residential application, improperly installed, or damaged from the impact caused by a heavy object being dropped on the sink or from improper handling.

BNK shall not be liable for any inconvenience or expense for material or labor related to the removal or replacement of a defective sink or for any loss or damage to any person or property whatsoever resulting from the defective sink. All transportation costs to and from the point of purchase will be the responsibility of the purchaser. Any sink returned must be in the original packaging and include all the accompanying accessories, parts, and documentation. The manufacturer reserves the right to inspect and/or request digital pictures of any sink reported to be defective prior to replacement of the sink.

Manufacturing defects and conditions which are covered by this quartz composite sink warranty:

- Surface blemishes
- Bubbling
- Thermal cracking

BNK shall not be liable in case of:

- Shipping or freight damage
- Chipping, cuts or nicks
- Scratches or scuff marks due to use
- Hard water or mineral deposits
- Inconsistent color or surface dullness
- Holes drilled incorrectly
- Installation damage
- Abuse or misuse (i.e. impact damage due to objects dropped in the sink, hot pots placed in the sink)

It is important that the professional fabricator installer (hereafter "PFI") and end-user carefully inspect the sink for damage immediately upon delivery. If any damage is not reported and documented on the delivery receipt with the shipping carrier upon delivery all insurance coverage ends and BNK will not be able to file a claim or send a replacement sink.

To submit a warranty claim it is the responsibility of the PFI or enduser to submit to BNK proof of purchase and a minimum of five (5) high resolution photographs clearly showing the manufacturing defect. Replacement cost EXCLUDES transportation and any materials and labor costs for the removal or re-installation.

No other warranties, express or implied, are made. Under no circumstances shall BNK be liable for any loss or damage arising from the purchase, a defect in, or use or inability to use quartz composite sinks, or for any special, indirect, incidental or consequential damages. BNK's liability under this warranty is limited to the repair or replacement of the defective item at BNK's discretion to the purchase location. No representative, dealer or any other person is authorized to make any warranty, representation or promise on behalf of BNK.